



Arlington-Fairfax Chapter, Inc. • Izaak Walton League of America

NEWSLETTER

Volume 56, Number 1

February, March & April 2018

14708 Mount Olive Road
Centreville, VA 20121-2517

Disadvantaged Children's Christmas Party, December 9, 2017

This December ends another very good year for Cub Run Archers (CRA) with a most successful and enjoyable post-meeting luncheon attended by fifty-plus members and guests. If you were unable to attend, you missed a meal that Zagat can only hope to rate.

I was not intimately involved with this year's Disadvantaged Children's Christmas Party so there may be more than a few errors and omissions. There is no way to recognize all of the volunteers that salvaged this year's Christmas for the disadvantaged children, instead I will try to explain the events as they happened. At first preparations went as previously choreographed, but the forecasted weather was the wrench thrown into this smooth-running machine. In anticipation of the coming storm, Fairfax County cancelled all non-essential services, which included our Christmas Party. Carl Armstrong then had to make decisions that involved a mountain of cooked food, purchased presents, and an assembled corps of IWLA and county volunteers.

After a nervous review of a few options, Carl, Amada, and Brian made the decision to pack the meals and presents for each of the 62 children. Margo Dias-Pareja, principal of Centre Ridge Elementary School, with help from five members of her staff, provided the list of children and family members. Instead of serving the meals, Amanda Armstrong formed the volunteers into an assembly line, packing the meals and presents into shopping bags provided by Shoppers Food Warehouse at no charge. Then the packages for each family were arranged for expedited delivery based on information provided by Margo and her staff. Brian Talbot, a Fair Oaks firefighter, who is also an IWLA member, coordinated the fire company part.

From there the packets were delivered by a mini-fleet of vehicles with drivers and runners provided by the Fairfax County Fair Oaks Volunteer Fire Company. As I was leaving

Christmas Party continued on page 4



Chapter Contact Information

Chapter Officers

<i>President</i>	Tom Ciarula	703-250-0947
<i>Vice President</i>	Pamela Meara	703-362-7293
<i>Secretary</i>	Sean Gagnon	703-434-9015
<i>Treasurer</i>	Bob Crisman	540-338-7316
<i>Membership Chairman</i>	Benn Crandall	703-631-4495

Chapter Directors

<i>Air Range</i>	Roger Thrasher.....	703-789-7080
<i>Conservation</i>	John Seaberg.....	703-830-9365
<i>Education & Training</i>	Bucky Sills	703-830-0458
<i>Field Archery</i>	Dick Riemer.....	703-543-8585
<i>Rifle & Pistol</i>	Ed Franzosa.....	703-255-3088
<i>Skeet & Trap</i>	Bob Brino	703-368-4934
<i>Target Archery</i>	Dan Roberts.....	703-835-1101
<i>Youth Activities</i>	Joseph Turner.....	703-628-4808
<i>Directors-at-Large</i>	Carl Armstrong.....	703-830-5091
	Dave Cunningham	202-436-6410
	Randy Hancock	703-830-8539
	Chris Rose	703-585-7351
	Oscar Starz	703-321-8626
	Art Twichell.....	703-960-6524

Committee Chairs

<i>Adopt-A-Highway</i>	Steve Rumble.....	703-946-6920
<i>Advance Planning</i>	<i>Your Name Here</i>	<i>Your phone #</i>
<i>Air Range</i>	Roger Thrasher.....	703-789-7080
<i>Buildings and Grounds</i>	Bucky Sills	703-830-0458
<i>Bull Run Muzzleloaders</i>	Tony Sucher.....	703-354-2726
<i>Caretaker</i>	Don Dallman.....	703-888-9197
<i>Chapter Field House Mgr.</i>	Ed Forsberg	719-238-0231
<i>Conservation</i>	John Seaberg.....	703-830-9365
<i>Education & Training</i>	Bucky Sills	703-830-0458
<i>Field Archery</i>	Dick Riemer.....	703-543-8585
<i>Historian</i>	<i>Your Name Here</i>	<i>Your phone #</i>
<i>Junior Olympic Archery</i>	Dan Roberts.....	703-835-1101
	Lani Young	703-742-8142
<i>Meeting Program</i>	Tom Ciarula	703-250-0947
<i>Membership</i>	Benn Crandall	703-631-4495
<i>Office Admin. Assts.</i>	Cristina Frerking	703-631-4495
	Jim Smith	703-631-4495
<i>Newsletter</i>	Pamela Meara	703-362-7293
<i>Pond Manager</i>	John Seaberg.....	703-830-9365
<i>Program Outreach</i>	<i>Your Name Here</i>	<i>Your phone #</i>
<i>Public Relations</i>	<i>Your Name Here</i>	<i>Your phone #</i>
<i>Rifle-Pistol Range</i>	Ed Franzosa.....	703-255-3088
<i>Scholarship</i>	David Dobbins.....	703-753-0878
<i>Scouting Activities</i>	Tom Pike	703-802-0740
<i>Skeet & Trap Range</i>	Bob Brino	703-368-4934
<i>Target Archery</i>	Dan Roberts.....	703-835-1101
<i>Youth Activities</i>	Joseph Turner.....	703-627-4808



Chapter Board of Directors' Meeting

1st Tuesday of each month
7:30 p.m. @ Chapter field house
All members welcome

Attend Your Chapter Meetings

General Membership Meeting
3rd Tuesday of each month
7:30 p.m. @ Chapter field house

Field House Phone Numbers

<i>Chapter field house</i>	703-631-4495
<i>Rifle & Pistol field house</i>	703-631-4496
<i>Skeet & Trap field house</i>	703-631-4497
<i>Field Archery field house</i>	703-631-4498
<i>Sills Air Range</i>	703-631-4818

Chapter President's E-mail

ciarulat@cox.net

Chapter's Web Site

www.arlingtonfairfax-iwla.org

Chapter's Facebook Page

Arlington-Fairfax-Chapter-Inc-Izaak-Walton-League-of-America

Chapter Field House Office Hours

1st and 3rd Tues..... 1:00 p.m. to 9:00 p.m.
All other Tues..... 1:00 p.m. to 4:00 p.m.
Other times, call Cristina Frerking & Jim Smith..... 703-631-4495

Property Physical Address

14708 Mount Olive Road, Centreville, VA 20121-2517

Mailing Address

Post Office Box 366, Centreville, VA 20122-0366



Volunteers

Our Chapter is run by VOLUNTEERS.

With the exception of three part-time contractors, our Chapter is run by volunteers. Everything else that is necessary for us to be open every day is done by volunteers. All the Officers, our entire Board, all our Range Officers, the people that cook the food at our parties and picnics and many, many, other things, ALL DONE BY VOLUNTEERS.

Some are still employed full time and they give of their few hours with their families to do their part. Some drive over an hour to help do their part, but again all are volunteers.

While I was at the Rifle & Pistol range one day, talking to the on-duty Range Officer, someone came by to tell the Range Officer there was trash on the floor of the bathroom that needed to be picked up. This was unnecessary as everyone should do their part to keep the Chapter clean.

We do very little to thank all these people. One small thing is the \$50 credit for those who do a mere eight hours of volunteer work around our Chapter. We are going to add a little to that and starting this year, anyone who did their eight hours in the past year gets a free ticket to our annual picnic. If anyone has any ideas of anything else we can do to show our appreciation for our volunteers, please contact me. One small thing, be sure to thank them for their time and dedication.

Thanks, *Tom Ciarula*

Tom Ciarula, President
Arlington-Fairfax Chapter, Inc.
of the Izaak Walton League of America



SIGN UP!



SignUpGenius®

Please use to sign up for Volunteer Opportunities—located on the Chapter Home Web page.

Donate to Arlington-Fairfax Chapter by Using AmazonSmile

Chapter members are reminded they can donate to the Chapter by registering and using AmazonSmile at www.amazon.smile.com when they shop on Amazon. Amazon will donate 0.5% of the purchase price from your eligible AmazonSmile purchases to the Chapter. Our Chapter is listed with AmazonSmile as *Izaak Walton League of America Arlington-Fairfax Chapter*.

amazonsmile

Please see <http://smile.amazon.com/about> for program details.

Seasoned Firewood for Sale



Mixed Hardwood

\$125 per cord



Contact Bucky Sills

(703) 906-5362

IWLA Mission

To conserve, restore, and promote the sustainable use and enjoyment of our natural resources, including soil, air, woods, waters, and wildlife.

Izaak Walton League Member Pledge

To strive for the purity of water, the clarity of air, and the wise stewardship of the land and its resources; to know the beauty and understanding of nature and the value of wildlife, woodlands, and open space; to the preservation of this heritage and to man's sharing in it.

I pledge myself as a member of the Izaak Walton League of America.

Christmas Party continued from page 1

the property sometime after 3 p.m., I met two volunteer firemen awaiting the return of their comrades from their delivery assignments. I would like to thank and recognize each of the volunteers, but I believe that honor belongs to Carl Armstrong. However, I would like all to know as an outside observer I am impressed and stand in awe of your performance this Christmas. I wish you all a very MERRY CHRISTMAS.

I think it is time to assess and restate the primary purpose of CRA. Yes, I know all about the Virginia Bowhunter Association (VBA) mandate and Chapter intent to offer archery to the members. However, over the past few years we have come a long way in promoting archery with the Archery 101 and 201 classes, the IWLA competitive archery group, the George Mason archery group, and our welcome to any potential archer.

CRA is a place where you can enjoy the quiet Zen-like archery shooting or a place to shoot with friends that rag and mess with you as you try to shoot. It should also be a place where you can escape the pressures of work, school, or the occasional problem at home.

It should also be a place where you can sit and shoot the bull on any subject that angers, interests, inspires, or

perplexes you and be a place that causes you to drop all pretentious or self-serving behavior and just be yourself with folks of similar interests. For the most part, this is Cub Run Archers and I would like to encourage everyone to share this gem with other Arl-Fx IWLA members and guests.

From time to time I hear complaints about the lack of volunteers or the amount of work that needs to be done. I ask everyone to just stop and think of the number of volunteers we use throughout the year for: the Christmas party; Women on Target; the Wounded Warriors; the picnic for children with disabilities; the annual picnic; the FITA shoots; the VBA shoots; the money shoot; or the maintenance and repair of various archery facilities and ranges.

Please keep in mind this list does not include Rifle and Pistol, Air Rifle, Shotgun, the campsites, the pond, and the grounds not covered above. And, yes, I also hear "it's always the same people who volunteer" and to some degree that may be true, but a lot of the volunteers get a special joy assisting with certain events or shoots.

The whole purpose of this rambling is to convey a very sincere **THANK YOU** to all who have volunteered and to wish all a Merry Christmas and a prosperous New Year.

Bob Walla
President, CRA



AFC-IWLA Membership Minutes

It's Not Too Late to Renew!!

Renew Online at <http://www.arlingtonfairfax-iwla.org> OR drop off your written form at the Chapter field house in the box marked "Membership."

Important dates about your membership:

Your 2017 range badge insert will expire on February 15, 2018. The code at the main gate will be changed on February 15, 2018.

Late Fee Amnesty Day

On Tuesday, February 20, 2018, for one day ONLY, the membership office will waive the \$40 late fee for your 2018 membership renewal. This is a one-time only opportunity. You must drop off your form and your check at the membership office. We will have extended hours from 1 p.m. to 8:30 p.m. Renewal forms are online, in this newsletter, and at all clubhouses.

Important Notices and Reminders:

- We no longer issue Arlington-Fairfax membership cards. Your national IWLA membership card will now

serve as your ID card for our Chapter and will include your gate code and insert.

- Your 2018 badge inserts (orange) and membership cards are sent to you as soon as we receive your membership card from the national office. This process can take up to 45 days.
- IF YOU MOVE AND CHANGE YOUR ADDRESS ... PLEASE let us know!
- IF YOU CHANGE YOUR E-MAIL ADDRESS ... PLEASE let us know!

Volunteer Opportunities

Don't forget to check out the volunteer opportunities available to the members. These next few months we will be hosting special events that will require many volunteers. Simply go to our Web site homepage and click on the *SignUpGenius* box.

"More next issue ... until then, get out to our Chapter and have some fun."

—Beau Crandall
Membership Director

SCHOLARSHIP NEWS

As a means of tangibly displaying the concern of our Chapter for both the environment and the young people of this area, the Chapter will be awarding its 2018 Environmental Studies Scholarship this coming spring. The scholarship will be awarded to a local area high school graduate. The total amount of the scholarship will be \$20,000 and will be paid in four annual installments of \$5,000 to the recipient's college of choice.

Applications will be accepted from high school seniors who are currently enrolled in Fairfax County, Fairfax City, Arlington County, Manassas, Manassas Park, or Prince William County schools (either public or private). The applicant must graduate this coming spring and plan on majoring in Environmental Sciences or a related field of study.

The recipient of the scholarship will be selected by the Arlington-Fairfax Chapter's Scholarship Committee. The committee will review the applications submitted and make their decision based on several factors including academic achievement, financial need, environmental

activities and achievements, and the individual character of the applicant.

Interested seniors can access the application from the Chapter's Web site (www.arlingtonfairfax-iwla.org). Scholarship information was mailed to all local schools in January. Students may also request a copy of the application directly by writing to

Scholarship Committee
Arlington-Fairfax Chapter, Inc.
P.O. Box 366
Centreville, VA 20122-0366

or by calling the Chapter at 703-631-4495 and leaving their name and address on the voice mail.

Membership in the Arlington-Fairfax Chapter of I.W.L.A. is neither required **NOR** does it constitute a conflict of interest and Chapter members are strongly encouraged to promote applications from all qualified applicants. Completed applications must be received **NO LATER THAN April 1, 2018.**

Requested—Revision to Range Rules for Air Range, Field Archery & Target Archery

Purpose & Rationale: To update and clarify existing Arlington-Fairfax Chapter, Inc., IWLA, range rules. This will be voted on by the membership at the February 20, 2018, general membership meeting. (Approved by the BOD at the November 14, 2017, meeting.)

Revisions to Air Range Rules, Field Archery Range Rules, and Target Archery Range Rules

November 2017

Air Range Rules

Section I

Access to the Air Range

1. **CONDUCT.** Each person entering the Air Range is obligated to act in a safe and responsible manner. Parents are responsible for the conduct of their children. The Air Range is defined as the Air Range building and the surrounding walkways and patios. The firing area is defined as the room inside the internal double doors where active firing takes place.
2. **RANGE USE.** The Air Range is open to Chapter members and Junior Chapter members as outlined in the Chapter By-Laws and Grounds Rules. All members and guests using the Air Range will sign in and comply with any instructions on lane usage.
3. **GUESTS AND GENERAL PUBLIC.** Chapter members may bring guests to the range during any open session. In order to provide outreach and promote the shooting sports, members of the general public may also use the range during announced open sessions (typically Monday and Friday evenings). The first five visits are complimentary. All individuals using the Air Range will sign in and comply with any instructions on lane usage. First-time visitors must complete the Air Range Safety and Introduction Briefing and sign a Waiver Form (once a year). Veterans participating in Wounded Warrior programs have access to the range during scheduled Wounded Warrior activities and during open practices at no cost (complimentary). Shooting athletes currently on NCAA teams, college club teams, or the USA Shooting National Teams are welcome to occasionally shoot at the Air Range (on a complimentary basis).
4. **RANGE SAFE PERSONS.** Chapter members, guests, and visitors must complete the Air Range Safety and Introduction Briefing before entering the firing area for the first time. At that point individuals are considered to be range safe subject to restrictions in the range safety rules.
5. **SUPPLIES AND EQUIPMENT.** Supplies include compressed air, pellets, and targets. Equipment includes air guns, prone mats, stands, jackets, and other shooting gear. As an outreach program, the Chapter will provide complimentary supplies and equipment (as available) to Chapter members and shooters from the general public during open sessions for up to five visits. After five visits, Chapter members are expected to either personally provide **all** their own equipment and supplies (**including compressed air**) or to pay air range fees. After five visits, members of the general public must pay air range fees. The Chapter Board of Directors will set and publish the air range fees.
6. **YOUTH SHOOTING.** A primary aim of the Air Range is to promote local youth shooting and youth shooting sports. This includes acting as one of the main ranges for Potomac High School Rifle League (PHSRL) teams both in-season and out-of-season. PHSRL athletes must pay the yearly air range fee, which includes the cost of Junior Chapter membership as well as access to supplies and equipment as needed.
7. **MEMBERSHIP CARDS OR FEES PAYMENT TOKENS.** Chapter members must present their membership cards and/or air range fees payment token upon request.

Non-members must show their fees payment token upon request (after the five complimentary visits).

8. **RANGE SCHEDULE. All Air Range use must be scheduled with the Air Range Director.** The Air Range schedule will be posted on the Chapter Web site, on a dynamic Internet calendar site (currently <https://tinurl.com/airrangecalendar>), and published in the Chapter newsletter. The range may be reserved and/or rented for approved Chapter-sponsored matches, junior shooting activities, or externally sponsored matches. PHSRL and Chapter-sponsored matches are scheduled through the Air Range Director. Standard PHSRL practice times are subject to modification for range special events. External Air Range usage is first tentatively scheduled with the Air Range Director, then the sponsoring group must accomplish the Facilities Use Request process outlined on the Chapter Web site (<http://www.arlingtonfairfax-iwla.org>).
9. **RANGE ACCESS.** Approved Range Safety Officers and Coaches will receive time-coded access to the Air Range using an electronic lock system. Codes will be reset periodically. Approved Range Safety Officers and Coaches may also be given combo access to the gun safe and statistics office.

Section II

Range Safety

1. **RANGE SAFETY OFFICERS.** The Air Range Director will develop procedures to appoint and orient Range Safety Officers (RSOs) to operate the range and enforce range rules. RSOs must be over the age of twenty-one (21) years and must be Chapter members. RSOs are responsible for safe and efficient operation of the Air Range and have wide discretion to ensure such operation. **Decisions of the Range Safety Officer must be complied with immediately.**
2. **RANGE ASSISTANTS.** To assist the Range Safety Officer in ensuring safe and efficient range operations, non-shooting adults over eighteen (18) years of age may be appointed as a Range Assistant (RA) following a short training session given by a Range Safety Officer. The RA is a non-coaching individual who assists the RSO in ensuring safe and efficient range operations.
3. **COACHES.** Individuals over eighteen (18) years of age who are certified Coaches may coach on the Air Range. Certified junior coaches less than 18 years of age may also coach with the permission of the RSO. Individuals will provide proof of training if requested. Coaches must be familiar with all the Air Range rules and must comply with Air Range Coach certification procedures.
4. **GENERAL SAFETY.** All individuals must have completed the Safety and Range Introduction Briefing prior to entering the shooting area. This includes shooters and non-shooters. **Use of Clear Barrel Indicators (CBIs) and eye protection is mandatory.** By definition, eye protection involves some kind of material between the eyes and likely eye hazards. Safety glasses, regular glasses, and competition shooting glasses meet the air range eye protection requirement if they in fact have material covering both eyes. For competition shooting glasses, this means there must be a lens or occluder over both eyes when the air range has been called "hot" by the RSO. All individuals must obey instructions from the Range Safety Officer, Coaches, and Range Assistants. Depending on the number and skill level of the shooters, the RSO will determine the proper ratio of Coaches or RAs to shooters. If the RSO determines there is an unsafe ratio, they have complete discretion to limit the number of shooters on the line until more Coaches or RAs arrive.
5. **YOUNG AND/OR INEXPERIENCED SHOOTERS.** Prospective shooters under the age of eight (8) must have Certified Coach direct supervision while shooting, along with a sponsoring adult present on the range. Direct supervision may also be required for inexperienced or immature shooters over the age of 8 based on RSO or Coach discretion. If no Coach is available to provide sufficient direct supervision, prospective shooters must wait until a Coach is available. Coaches may refuse to coach any prospective shooter who they feel is not capable of safe shooting. The RSO may deny entry to the firing area for any prospective shooter who they feel is not capable of safe shooting.
6. **SAFE SPORT POLICY.** All named air range staff will follow the USA Shooting Safe Sport Policy. Two-deep adult coverage is required at all times. This means that two adults, one of whom must be twenty-one (21) years of age or older, are required any time junior shooters are in the range. One-on-one contact between adults and non-family junior shooters is prohibited. Junior shooters are not permitted in the range if a Range Safety Officer is not on duty.
7. **ALLOWABLE AIR RIFLES/PISTOLS.** The range is designed to support target shooting for standard .177 caliber air guns. As such, higher caliber air guns and BB guns are not permitted. Only diabolo (wasp-

waisted) lead pellets with a wadcutter (flat) front are to be used. Pellets must be less than 10 grains in weight. In addition, air rifles/pistols must shoot at a velocity less than 650 feet/second. Standard competition air guns complying with International Shooting Sports Federation (ISSF) rules meet this velocity requirement. If questioned by the Range Safety Officer, the responsibility lies with the shooter to demonstrate that the equipment in question complies with the requirements.

8. **LANE USAGE.** Shooters arriving on the line will ask the Range Safety Officer for a lane assignment. The RSO may group types of shooters as required, such as putting experienced shooters in one area and new shooters in another area. The marked firing position is reserved for the shooter, their actively used equipment, and a folding chair (optional). The yellow walkway is for the use of the Range Safety Officer, transiting shooters, Coaches, and RAs, so it must be kept clear of equipment. Shooting bags and cases may be placed behind the yellow walkway in the gray area. Spectators must stay in the gray area.
9. **FOOD AND DRINK.** Covered drinks only are allowed in the firing area. Other food and drink should be consumed in the lounge area.
10. **SPECIAL EVENTS.** During special events or when the use of the Air Range is approved for outside groups, these rules may be modified as necessary to permit the conduct of such events provided that basic operating and safety rules are not compromised.
11. **STANDARD OPERATING PROCEDURES.** The Air Range Director may supplement these range rules with additional Standard Operating Procedures (SOPs).

Section III

Changes and Approval

1. **REQUIRED.** These rules for the Air Range access and safety are subject to change ONLY with the approval of the Air Range Director. Any change of the Air Range Rules must be approved by a simple majority vote of a quorum of the Chapter Board of Directors, published in the next issue of the Chapter newsletter, and confirmed by a simple majority vote of a quorum of the Chapter membership at a regularly scheduled membership meeting. Air Range Rules relating to emergency safety issues may be changed by the Air Range Director with subsequent approval by the Chapter Board of Directors.

Field Archery Range Rules

1. **APPLICATION.** These rules apply to all Chapter members and guests who use or visit the Chapter Field Archery facility. The Field Archery facility consists of the Outdoor Practice Range, the 28-target Field Range, the Indoor Archery Range, and associated buildings and grounds.
2. **ALCOHOL.** Alcoholic beverages are **not permitted** on any of the Field Archery Ranges.
3. **SIGN IN.** All members and guests shooting on the Field Archery Facility must sign in **BEFORE STARTING TO SHOOT** and sign out **UPON LEAVING THE RANGE**. Guests must list sponsor when signing in.
4. **ARROW LIMIT.** If there are more than four archers shooting, limit yourself to six arrows.
5. **BROADHEADS. NO CORE DRILLING BROADHEADS ARE ALLOWED TO BE SHOT AT THE FIELD ARCHERY RANGE.** This would be the **TOXIC** and the **Cyclone** broadheads and any new core drilling broadheads that come onto the market.
6. **TARGETS.** The construction, placement, and use of all permanent and temporary targets anywhere on the Field Archery Facility shall be approved by the Cub Run Archers (CRA) Range Captain **PRIOR** to use. Field Archery or personal broadhead targets shall be placed for use such that any miss, pass-through, or ricochet will **NOT** impact in a non-broadhead target butt.
7. **CHILDREN.** Children under the age of eighteen (18) must be under the **DIRECT** supervision of a Range Qualified parent or member when at the Field Archery Facility; except when shooting in a tournament or participating in an archery class put on by a certified archery instructor.
8. **CHAPTER MEMBERS.** All Range Qualified Chapter members may use the Field Archery ranges at any time the ranges are not closed; subject to the FIELD ARCHERY SAFETY RULES.
9. **GUESTS.** The number of visits allowed per guest each year shall be defined in the Chapter By-Laws and Grounds Rules; i.e., no more than three (3) visits per year for any guest living within a 50-mile radius of the Chapter. Before shooting on the Field Archery Facility, each guest must:
 - a. Each year sign a Chapter release form on the first yearly visit, and
 - b. Be under the DIRECT supervision of a Range Qualified Chapter member.

Each supervising Chapter member will be responsible for the conduct and actions of his or her guests.

10. CHAPTER AND CRA EQUIPMENT. All archery equipment may be used by any Chapter member in good standing. This includes bows, arrows, arrow straightener, bow press, arrow cutter, and other archery equipment that may be purchased from time to time. No equipment shall be removed from the Field Archery Facility without the permission of the designated Director for Field Archery or the President of Cub Run Archers.

11. PERSONAL PROPERTY. No one shall handle or use another's archery equipment without the owner's permission.

12. FOUND ARROWS. All found arrows shall be returned to the found arrow box at the Archery Fieldhouse for return to their owners.

13. CROSSBOWS. Crossbows may only be shot from the designated crossbow station. Bag targets are only for shooting bolts tipped field points. Shoot fixed or mechanical broadheads only into the broadhead target butts. Follow all crossbow shooting instructions posted at the crossbow station. **Crossbows may be shot outside the crossbow station, standing only, when one is qualifying to participate in an archery hunting program and must be under the supervision of a qualifying range officer.**

14. AIRBOWS. No airbows are allowed to be shot at the Field Archery Ranges.

15. SAFETY RULES.

- a. NEVER load an arrow on the bow until ready to shoot.
- b. ALWAYS keep a loaded bow pointed down range.
- c. NEVER walk the field or 3-D range in reverse order. ALWAYS proceed from target to target until the path returns to an exit from the range.
- d. ALWAYS make sure that the target, shooting lanes, and nearby areas are clear before loading, drawing, and shooting an arrow.
- e. NEVER retrieve arrows until all archers are finished shooting. At the target butts never stand behind anyone pulling arrows.
- f. NEVER draw a bow with an arrow pointed above a horizontal position. A serious situation may occur if an arrow is accidentally released when the arrow is pointed above the target. **Never shoot an arrow straight up—this creates an extremely hazardous situation and will be referred to the Chapter Board of Directors for disciplinary action.**

g. Broadhead tipped arrows shall be shot ONLY at broadhead targets. Anyone caught shooting broadhead tipped arrows at other than broadhead targets will be referred to the Chapter Board of Directors for disciplinary action.

h. ALWAYS place the red/orange flag or your bow across the face of the target butt when looking for a lost or pass-through arrow.

16. UNSAFE EQUIPMENT. The Cub Run Archers (CRA) shall have the authority to require the removal of equipment deemed as unsafe from immediate possession and use on the Field Archery Facility. Upon direction from a CRA member, equipment deemed unsafe shall be immediately returned by the possessor to the possessor's vehicle.

Field Archery Safety

A bow and arrow is **NOT** a toy. Many persons fail to realize that the danger of injury from an arrow is always present. Even the blunt rubber tips on "dime store sets" can put out an eye is shot at close range. Any of the metal tips used in target archery can be lethal even if shot from a lightweight bow.

Before placing archery equipment in the hands of a youngster, you must be sure that he is aware of basic safety principles. As with firearms, proper training will help prevent a later disaster. The primary rule, of course, is:

**Never point an arrow at anyone or anything
you do not want to shoot.**

Songbirds, chipmunks, squirrels, and every other living creature must be placed in the "off limits" category. Teaching youngsters sport without sportsmanship is irresponsible.

Children should never be allowed to shoot except under adult supervision and during all training respect for safety should be foremost. Shooting arrows up in the air, failure to make sure the target area is clear, or pointing a nocked arrow in any direction but at the target should not be allowed.

Field Archery Target Safety

Anything worth doing at all is worth doing right. This maxim applies to field archery target shooting as much as to any other sport. Before anyone starts to shoot, an inspection of equipment is essential. Most bow breakage is due to improper stringing and/or mishandling. Therefore, the first consideration in the handling of equipment is learning to string a bow properly. After stringing, be sure

the string loops are securely seated in the bow nocks. At the same time, check to see that your bowstring is not frayed or worn and that the arrow nocking point has not slipped. Next, check all of the arrows you intend to use. Be sure the fletching is on tight, and in the case of wood or glass arrows, check for cracks and splinters.

Never try out another person's equipment unless expressly invited to do so. Never draw and release a bow without an arrow in it. Such dry shooting puts a terrific strain on the bow limbs and string and can result in a broken bow. **Never shoot arrows straight up to see how high they will go.** An arrow is as dangerous falling as ascending and it is much harder to see. If you want to watch yours arrows soar through the blue, flight-shoot on an open expanse away from people.

Do not use targets that won't stop arrows unless you have a suitable backstop such as a sandbank or hillside. Remember, too, that arrows can glance off trees or other solid objects and change course. For this reason, you must be sure that not only is your line of flight to the target clear, but that the area behind the target is clear also. If or one of your party loses an arrow behind a target butt, lean the bows against the face of the target so they can readily be seen from the shooting position while searching behind the butt.

You may want to use an arm guard. Just one slap of the bowstring can raise a painful welt on the arm if it is not protected. When two archers are shooting at the same target, the one who finishes first should step quietly back from the shooting line and wait for the other to finish. If, while shooting in competition, an arrow falls from your bow in front of you, you may retrieve and shoot it only if you can pull it back with your bow tip without leaving the shooting position.

When pulling arrows from a target, always grasp the shaft with both hands close to the target face and straight back. This method of withdrawal prevents shafts from bending and prolongs the life of the target face. When drawing an arrow from the ground, don't pull up on it, but draw it out at the same angle it entered. Last, but not least, no matter how expert you are, never permit anyone to hold a target for you. This risky procedure has turned fun into tragedy. Common sense makes for safe archery.

Changes and Approval

1. **REQUIRED.** These rules for the Field Archery Range access and safety are subject to change **ONLY** with the approval of the designated Director for Field Archery. Any change of the Field Archery Range Rules must be approved by a simple majority vote of a quorum of the

Chapter Board of Directors, published in the next issue of the Chapter newsletter, and confirmed by a simple majority vote of a quorum of the Chapter membership at a regularly scheduled membership meeting. Range Rules relating to emergency safety issues may be changed by the Director for Field Archery with subsequent approval by the Chapter Board of Directors.

Target Archery Range Rules

Section 1—General

1. **CONDUCT.** Entry to and presence on the Target Archery Range is conditional upon responsible and safe conduct.
2. **MEMBER USE OF THE RANGE.** Any Chapter member may use the Target Archery Range. Anyone using the Target Archery Range must adhere to the posted safety rules.
3. **AGE.** Youth under eighteen (18) years of age must be supervised by a responsible Range Qualified parent, guardian, or Chapter member.
4. **ACCESS.** Archers have unlimited access to the Target Archery Range at all daylight times, except when tournaments are being held or the range is closed (for example for repairs). The Target Archery Range is open to all Chapter members on a first-come, first-served basis. Groups such as the Junior Olympic Archery Development (JOAD) program may request special scheduling for the use of the range but shall not have exclusive use of the range at any time. Scheduling shall be done through the designated Director for Target Archery.
5. **GUESTS.** All Range Qualified Chapter members are authorized to bring guests to use the Target Archery Range. No guest will be allowed to use the range unless accompanied and supervised by a Chapter member in good standing. Members are responsible for the conduct and actions of their guests. The number of times that any one guest may be allowed to use the range is subject to the Chapter rule (three times in one year). Members may bring dependent and spouses to the range without regard to this limit or the number of uses, but the member must remain in close proximity and immediate supervision of such family members at all times and members are responsible for the conduct and actions of their family members.
6. **BASIC SAFETY KNOWLEDGE.** Any guest of a Chapter member must be familiarized with the basic safety and bow/arrow handling rules before being allowed to use the Target Archery Range. This familiarization may

be conducted by the Chapter member or by any Target Archery Range Qualified person.

7. **DRUGS/ALCOHOL.** Drugs and alcohol are **NOT** permitted on the Target Archery Range. Persons under the influence of alcohol or drugs are not permitted to use the range.
8. **RANGE SAFETY OFFICERS.** The designated Director for Target Archery will hold, or cause to be held, a Target Archery Range Safety Officer orientation on an annual basis. This orientation will cover the range use, safety, and general operating procedures. Target Archery Range Safety Officers will have access to the equipment sheds.
9. **SAFETY RULES.** The Safety Rules are specified in Section 4 below. These rules are covered in the annual Target Archery Range Safety Officer orientation. They are also posted on the shed at the Target Archery field. Any person violating any safety rule shall not be permitted to use the range.

Section 2—Special Events and Tournaments

1. **SPECIAL EVENTS.** During special events or when the use of the Target Archery Range is approved for outside groups, these rules may be modified as necessary to permit the conduct of such events provided that basic operating and safety rules are not compromised.
2. **SCHEDULING.** All tournaments, leagues, or other shoots with outside participants must be scheduled through the designated Director for Target Archery prior to the event.
3. **RULES.** Chapter scheduled tournaments are open to Chapter members and non-members. Equipment for each tournament shall be in compliance with the type of tournament being held.
4. **CLEAN UP.** All special events and tournaments must be properly cleaned up after the event by the sponsoring team. The field and sheds must be left in the same condition they were found before the event.

Section 3—Targets, Stands, and Equipment

1. **TARGET STANDS.** The Target Archery group will attempt to keep at least three (3) usable buttresses and stands on the Target Archery field at all times during the shooting season.

2. **TARGET FACES.** Practice target faces will be kept in the small shed for daily use on the range. Members may use their own target faces but should clean up the area after they have finished shooting.
3. **ARROWS/POINTS.** Only arrows with target or field points may be used on the Target Archery Range. **No broadheads are allowed.**
4. **BOWS.** All bows must have a maximum draw weight of 60 pounds or less. Compound bows must only be used on the designated targets and must adhere to the 60 pound draw weight limitation. To shoot a compound bow on the Target Archery Range, archer must be certified as a Target Archery Range Safety Officer or be under the supervision of a Target Archery Range Safety Officer while shooting. Any “high draws” will disqualify the archer from use of the range.

Section 4—Range Safety Rules

1. No shooter shall cross the shooting lines until an “all clear” has been called and acknowledged by ALL SHOOTERS on the line.
2. Shoot only 6 arrows at a time if people are waiting.
3. Keep yourself and your equipment in your own lane.
4. Always point the bow toward the target and/or the ground—NO HIGH DRAWING.
5. Please silence your phone; leave the shooting area to talk on the phone.
6. Never bend over on the shooting line if you drop an arrow or for any other reason.
7. Always step back from the shooting line if you finish shooting before others.
8. Please do not disrupt safety or shooting to take pictures.
9. Always WALK to and from the targets to retrieve arrows—pick up arrows on the ground first.
10. All archers must wear shoes covering the entire foot—no sandals.
11. Safely pull and carry arrows back to the shooting line. Always look behind you before pulling your arrows.
12. Anyone under the age of eighteen (18) must be accompanied by a parent, guardian, or a Range Qualified Chapter member.
13. No broadhead arrows allowed on the Target Archery Range.
14. All shooters must stand behind the shooting line at all times until arrows are collectively pulled.

15. Bows shall be hung on the designated bow racks or archer's bow stand when arrows are pulled. No bows shall cross the shooting line at any time.
16. Never leave bows or arrows lying on the ground.
17. Nocked arrows shall only be pointed down range. Never point a nocked arrow at anything or anyone except the target.
18. Shooting will only resume when the Range Safety Officer or ALL shooters on the shooting line issue a second "all clear" after ALL shooters have returned to the shooting line.
19. If looking for lost arrows always leave at least one group member at the target.
20. **WALK, don't run toward the targets.** Remember that the arrows are sticking out and can injure you. Approach the target from either side. Do not walk directly in front of the target. If you trip, you could fall into the arrows.
21. No alcohol or drugs are allowed. No archer is allowed on the range while under the influence of drugs or alcohol.
22. Bows and arrows are not toys. Please treat your bow and arrow as if it were a firearm.
23. Notify any Target Archery Range Safety Officer or the designated Director for Target Archery immediately of any unsafe behavior you notice around you at the Target Archery Range.
24. All sheds on the range must be locked before you leave the range.
25. Only three (3) buttresses and stands should be left on the range when you leave. The rest must be properly stored in the sheds.
26. Any found arrows shall be placed in the "lost arrow area" near the sheds.
27. No instruction or coaching for hire is allowed on the Target Archery Range.
28. Parents or guardians are fully responsible for their minor children.

Section 5—Changes and Approval

1. **REQUIRED.** These rules for the Target Archery Range access and safety are subject to change ONLY with the approval of the designated Director for Target Archery. Any change of the Target Archery Range Rules must be approved by a simple majority vote of a quorum of the Chapter Board of Directors, published in the next issue of the Chapter newsletter, and confirmed by a simple majority vote of a quorum of the Chapter membership at a regularly scheduled membership meeting. Range Rules relating to emergency safety issues may be changed by the Director for Target Archery with subsequent approval by the Chapter Board of Directors.



"Mountain Man" Russell Taylor recently volunteered his time and abilities to remove 30 dead ash trees from the steep side berm at Rifle and Pistol. Not only can he drop them, he can pick them up, too! Russell and others worked for a week removing the logs and debris from the range.



Alan Maslonek with his wife, Heather (taking the pictures) spent their volunteer days with Don Dallman replacing the mower blades and cleaning out the gutters this past summer.

Yeah Volunteers!



Membership Renewal

Arlington-Fairfax Chapter, Inc.
Izaak Walton League of America
P. O. Box 366
Centreville, VA 20122-0366

Your current membership expires December 31, 2017.

Dues **MUST** be paid prior to January 1, 2018.

If \$50 Dues Credit claimed, check here: ☐

Renewals postmarked after January 1, 2018—Add \$40 late processing fee!

Note: Your membership spot is not guaranteed if you are late.

Primary Member

Family Member

Membership Type: _____

Membership ID #: _____

Name(s) _____

Address—Street _____

City, State, Zip _____

Phone: (H) _____

(C) _____

(W) _____

E-mail: _____

Date of Birth: _____

- (1) **PRINT LEGIBLY AND FILL IN ALL** required information on this form. Clearly indicate any changes.
- (2) **SIGN THE MEMBER RELEASE ON THE BACK** of this form and return the top part of form with your check made payable to AFC-IWLA.
- (3) Questions/payment arrangements? Call Cristina or Smitty at **703-631-4495**. If necessary, leave your name and telephone number with your concern(s). Your query will be answered as quickly as possible.
- (4) If being reassigned to area far removed from Northern Virginia for 2 years or more, inquire about Inactive/Reserve status.

REGULAR Membership Types

- ☐ RG—Regular
- ☐ RGD or R or S—Regular (Disabled, Remote, or Senior)
- ☐ LF—Life Regular
- ☐ LFD or R or S—Life (Disabled, Remote, or Senior)
- ☐ LB—Life Benefactor
- ☐ ST—Student

2018 Dues

\$211
\$171
\$161
\$121
\$161
\$152

FAMILY Membership Types

- ☐ FM—Family Regular
- ☐ FMD or R or S—Family (Disabled, Remote, or Senior)
- ☐ FL—Family Life Regular
- ☐ FLD or R or S—Family Life (Disabled, Remote, or Senior)
- ☐ FB—Family Benefactor
- ☐ FBD or R or S—Family Benefactor (Disabled, Remote, or Senior)

2018 Dues

\$308
\$233
\$233
\$158
\$233
\$158

Remote—Residence is over 50 miles from the Chapter.

Senior—Age 60 or over as of 12/31/2017.

My check # _____ in the amount of \$ _____ made payable to AFC-IWLA is enclosed.

PLEASE SIGN THE MEMBER RELEASE ON BACK OF THIS STATEMENT BEFORE RETURNING

Detach here and submit the TOP portion with payment

Arlington-Fairfax Chapter, Inc.—Izaak Walton League of America
P. O. Box 366, Centreville VA 20122-0366

2018 Membership Dues Paid \$ _____ Date _____ Check No. _____

For tax purposes. Regular (RG) members may claim a \$53 deduction and Family (FM) members may claim \$82. Life Regular (LF) (LB) members may claim a \$6 deduction and Family Life (FL) (FB) members may claim \$7. Students (ST) may claim \$42

The Izaak Walton League of America—a non-profit conservation organization—is recognized as a Section 501(c)(3) public charity under the Internal Revenue Code. Minimum National dues are \$40 for individuals and \$60 for family memberships, which includes the Outdoor America magazine. Magazine is inseparable from dues. Chapter and Division dues may vary.

MEMBER RELEASE

Range Badges, Membership Cards, and the Gate Combination will not be furnished unless the completed Release Statement has been received by the Chapter. If this is a family membership, then both parties must sign.

Release Statement

In consideration of the permission granted to me to use the pistol, rifle, skeet, trap, and archery ranges and other facilities of the Arlington-Fairfax Chapter, Incorporated, of the Izaak Walton League of America, Centreville, Virginia, I do hereby for myself, my heirs, executors, and administrators irrevocably release and forever discharge the Arlington-Fairfax Chapter, Incorporated, of the Izaak Walton League of America (hereinafter "AFC-IWLA") and all of its officers, directors, agents, and employees, acting in or under color of his or her official capacity, from any and all claims, demands, actions or causes of action, costs, charges, and liabilities of whatever kind, on account of my death or on account of any injury to me which may occur from any cause during my use of its ranges and/or facilities.

This release is intended to cover all injuries, fatal or nonfatal, and illness of every name, type, kind, or nature, and personal property damage, if any, which may be sustained or suffered from any cause whatsoever connected with or arising out of or by reason of participating in the aforementioned activities. I know the risks and unexpected dangers involved in said activities and assume all risks of injury to my person and property that may be sustained in connection with the stated and associated activities, in and about the installation.

I further agree that I will indemnify and will hold harmless the AFC-IWLA and all officers, directors, agents, and employees thereof from any and all costs, charges, claims, demands, and liabilities of any kind arising from the improper or negligent actions of the undersigned while participating in the activities of its property.

I have reviewed the AFC-IWLA Range Safety Rules and the Chapter Ground Rules and I understand and agree to abide by all the provisions therein. I have read and understood the foregoing release. I certify that my attendance and participation in activities at the AFC-IWLA is voluntary.

This release form is in effect as long as I am a member of the AFC-IWLA, or for so long as I may use the aforesaid ranges and/or facilities, both now and at any future times, but in no event longer than is permitted by applicable law.

Signature

Date

2nd Signature (Family Member)

Date



IWLA Pledge



To strive for the purity of water, the clarity of air, and the wise stewardship of the land and its resources.

To know the beauty and understanding of nature, and the value of wildlife, woodlands, and open space.

To the preservation of this heritage and to man's sharing it,
I pledge myself as a member of the Izaak Walton League of America.



Arlington-Fairfax Chapter, Inc.
is sponsoring a
Shotgun Camp

This course encompasses teaching the basic knowledge, skills, and attitude necessary for safely using a shotgun and shooting trap.

Students will learn about shotgun parts and operations, ammunition, gun safety, and shotgun shooting fundamentals.

Monday, March 26, and Tuesday, March 27, 2018

9:00 a.m. to 4:00 p.m.

Registration Fee: \$200.00

Registration includes: Instructional materials, Loaner shotguns, Ammunition, Targets, NRA Day T-shirt and Attendance Certificate, and Lunch both days.

For more information, contact:

Bucky.Sills@arlingtonfairfax-iwla.org, (703) 830-0458

»»»» Complete Registration and Selection on Reverse Side ««««

The faculty for the Shotgun Camp will be comprised of members of our Training Team. They are experienced Shotgun Instructors and Shotgun Coaches, and are all seasoned competitors.

- **NRA/ATA Trap Camp**—encompasses the basic knowledge, skills, and attitude necessary for safely using a shotgun and shooting trap.
- **NRA/NSSA Skeet Camp**—encompasses the basic knowledge, skills, and attitude necessary for safely using a shotgun and shooting skeet.
- **Intermediate Trap**—designed to allow experienced beginning Trap shooters to hone their skills on a variety of target presentations. Time will be spent on warm up with straight-aways and quartering angles, hard right and hard left angles, handicap, and doubles.
- **Intermediate Skeet**—designed to allow experienced beginning Skeet shooters to hone their skills on a variety of target presentations. Time will be devoted to work on Stations 1, 2, 6, and 7; Stations 3, 4, and 5; and Station 8.

Shotgun Camp Registration

Name: _____ *Age: _____

**Minor children (under 18) must be accompanied by a parent or adult guardian.*

Address: _____

City: _____ State: _____ Zip: _____

Telephone #1: (_____) _____ ☐ Work ☐ Cell ☐ Home

Telephone #2: (_____) _____ ☐ Work ☐ Cell ☐ Home

Telephone #3: (_____) _____ ☐ Work ☐ Cell ☐ Home

E-mail address: _____ T-shirt size _____

Emergency Contact: _____

Emergency Contact Telephone: (_____) _____ ☐ Work ☐ Cell ☐ Home

Below must be completed:

Choose ONE of the following:

☐ NRA/ATA Trap Camp

☐ Intermediate Trap

☐ NRA/NSSA Skeet Camp

☐ Intermediate Skeet

I will need a loaner shotgun

☐ Yes

☐ No

My shotgun is: ☐ Hinge action over-under

☐ Semiautomatic

☐ Pump

Gauge is

☐ 12ga

☐ 20ga

☐ 28ga

☐ .410 bore

******Only 12ga and 20ga ammunition will be provided******

I have shot _____ rounds of

☐ 16 yard Trap

☐ Handicap

☐ Doubles

☐ Skeet

I have shot in ☐ a competitive league

☐ ATA Trap Shoots

☐ NSSA Skeet Shoots

All Correspondence will be made through e-mail.

Make checks payable to:
Arl-Fx Education & Training

To pay by **PayPal**—please go to the following Web site:
<http://www.arlingtonfairfax-iwla.org/Education-regweb.php>

Mail Registration and checks to:
Education and Training
Arlington-Fairfax Chapter, Inc.
P. O. Box 366
Centreville, VA 20122-0366

Outdoor/ Indoor Archery

Competition Archery Team Competes in the STAR FITA Archery Tournament, November 4-5, 2017

Following several months of training and practice, the Competition Archery Team archers competed well during the STAR FITA archery tournament. What amazed the coaches when the team got there to shoot, the kids weren't nervous at all. They have done so much training and practicing at mock tournaments, that when they showed up to compete they were very calm—it was all smiles.

Divided into age and bow classes, it was the Competition Archery Team that represented the Arlington-Fairfax Chapter, Inc., Izaak Walton League of America, well at the STAR FITA archery tournament. Going toe-to-toe with some of the best young archers in the region, the Competition Archery Team archers maintained a sense of calmness. One after the other, Competition Archery Team members, ranging from 9 to 14 years old, made their way to the shooting line hoping for a clean shot. As the competition played out, it was clear early on that the Competition Archery Team was applying all they were taught by their USA Archery certified coaches.

Even though the Competition Archery Team earned two medals, they still had their sights set on a larger prize—the National Championships in James Madison University at Harrisonburg, Virginia, in the spring. As the fall season is not officially over for the Competition Archery Team archers, the team will continue to prepare for the 2018



Pictured from left to right: Matt Smith (Coach), Tiya Maroboina, Elyse Blazer, Nicholas Rising, Gwyneth Carter, Salvatore Del Vecchio, Molly Shear, Katherine Smith, Resa Combs (Coach). Front center: Jeff Del Vecchio (Coach). Michael Raso was not available for the picture.

Virginia National Archery State Tournament in March 2018. The founder, Dan Roberts, would ultimately like his team to become state champions, a recognition of all the hard work performed by the Competition Archery Team. But before they start focusing on their next goal, competing at the state level, the team will blow off some steam during some team building archery activities.

Donate to Arlington-Fairfax Chapter by Using AmazonSmile

Chapter members are reminded they can donate to the Chapter by registering and using AmazonSmile at www.amazon.smile.com when they shop on Amazon. Amazon will donate 0.5% of the purchase price from your eligible AmazonSmile purchases to the chapter. Our Chapter is listed with AmazonSmile as *Izaak Walton League of America Arlington-Fairfax Chapter*.



Please see <http://smile.amazon.com/about> for program details.

 **SIGN UP!**



Please use to sign up for **Volunteer Opportunities**—located on the Chapter Home Web page.



Tired of



Shooting in the Cold and Dark?

***Come try air gun shooting at the Sills Air Range
—We have heat and light!***

Open to all AFC-IWLA Members and Their Guests ...

- For adults and youths for air rifle and air pistol—bring your kids or grandkids
- A great introduction to the shooting sports—no loud noises when firing
- Modern electronic targets mean you spend more time shooting
- Club guns and equipment available to borrow—you don't need to bring anything

Multiple opportunities to shoot ...

- Air Range Open for Members
 - » Mondays (4:00–8:30 p.m.)
 - » Fridays (5:30–9:00 p.m.)
 - » 2nd and 3rd Sundays (11:00 a.m.–2:00 p.m.)
- Air pistol competitions the third Sunday of most months (9:00–11:00 a.m.)
- We can and will host more sessions if there is more demand
- See the Web site below for more details and current calendar events

iwlasillsairrange@gmail.com • <http://afc-iwla-sillsairrange.org>



Air Range

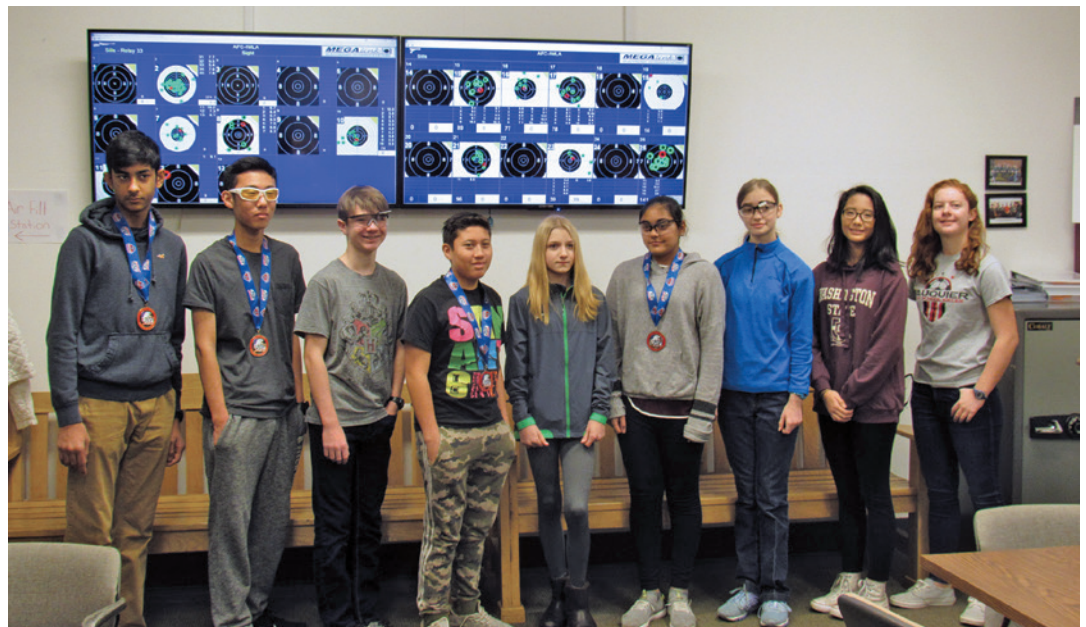
The Sills Range Air Pistol News

Six members of the NoVA Sharpshooters Air Pistol Club braved the winter weather on Saturday, December 9, 2017, and participated in their first official, sanctioned, match at the Norfolk Country Rifle Club in Chesapeake, Virginia. Their first match just happened to be the Junior Olympics State Championship which is the qualifying match for an invitation to the annual Junior Olympics held in Colorado Springs, Colorado. After only three months of training, four of the six competitors brought home medals: Victor Mou (Gold Junior Men), Andres Gonzalez (Silver Junior Men), Suman Sanghera (Silver Junior Women), and Bhavjeet Sanghera (Bronze Junior Men). Zillia Dollinger and Connor Shea also turned in superb performances. Congratulations to the NoVA Sharpshooters and their parents, who have done a marvelous job supporting the Youth Air Pistol Program!

The ARL-FX IWLA Sills Air Range Youth Air Pistol program continues in 2018 with training sessions on the second

and third Sunday of each month. There are two relays: Relay One is 12 Noon to 1:15 p.m. and Relay Two is 1:30 p.m. to 2:45 p.m. You can learn more on the Air Pistol Web page, <http://afc-iwla-sillsairrange.org/air-pistol/>, or contact Mark Budgeon at mgbudgeon@verizon.net or 703-490-5817. A reservation is needed to participate.

Over spring break, the Chapter is hosting an Air Camp on Monday and Tuesday, March 26-27, 2018. For more information and to sign up visit www.arlingtonfairfax-iwla.org/Education-regweb.php.



Air Range Safety Officers Needed

We hope to open the Air Range to all members every Sunday from noon to 5 p.m. starting in the summer. This would be a member-only, adult-only session. To do this we need people to sign up to take one Range Safety Officer (RSO) shift a month—staffing is our limiting factor. No experience necessary, we will provide training. Contact rogerthrasher@me.com for more information or to volunteer.

Chapter Air Range Open practice nights

Mondays 4:00 p.m. – 8:00 p.m.

Fridays 5:30 p.m. – 9:00 p.m.

Equipment is available to borrow and coaches are ready to help.

Air Range questions—contact range@afc-iwla-sillsairrange.org

Arlington-Fairfax Chapter, Inc.

is sponsoring an

Air Gun Camp

This camp includes coaching in two disciplines: international standing air pistol and three position precision air rifle. The camp is open to adults and children 12 years or older. Only 20 slots will be available for this camp.

Monday, March 26 and Tuesday, March 27, 2018

9 a.m. to 5 p.m.

Registration Fee: \$100.00

Registration Deadline: March 17, 2018



Registration includes:

Training materials • Coaching • Lunch Both Days
NRA Day T-Shirt and Attendance Certificate

For more information, contact: Pamela Meara

To register, send the below information to: pmeara01@gmail.com
or

Mail registration and checks to:

Education & Training, Arlington-Fairfax Chapter, Inc.

P.O. Box 366

Centreville, VA 20122-0366

Camp Preference (Check One): ☐ Air Pistol ☐ Air Rifle ☐ Both Air Pistol & Rifle T-shirt size: _____

Name: _____ Age: _____

Parent Name (for youth <18 years old): _____

Address: _____

City: _____ State: _____ Zip: _____

Contact telephone # (_____) _____ E-mail address: _____

Emergency contact: _____ & Phone (_____) _____

Make checks payable to: **ARL-FX Education & Training**

To pay by PayPal please go to the following Web site:

<http://www.arlingtonfairfax-iwla.org/Education-regweb.php>

All Correspondence will be made through e-mail.

Arlington-Fairfax Chapter Izaak Walton League of America

Announcing the 2018

Annual Fishing Derby and Picnic for Children & Adults with Disabilities

May 5, 2018

10:00 a.m. to 2:00 p.m. • Lunch is served at **Noon**
Hamburgers, Hot Dogs, Potato Salad, Coleslaw, Chips, Soda, and Desserts

Come out and enjoy a day of fishing and outdoor fun!

- **Hay Rides**
- **Air Rifle Shooting**—Shoot an air rifle under the supervision of an NRA certified instructor
- **Archery**—Try your hand at using a bow and arrow
- **Fishing Derby in our Stocked Pond**—Awards for most fish caught, biggest fish, and smallest

14708 Mount Olive Road, Centreville, VA 20121-2517
For directions visit our Web site: www.arlingtonfairfax-iwla.org

Contact: Pam.Meara@arlingtonfairfax-iwla.org or ucky.sills@arlingtonfairfax-iwla.org
to register. Please include number planning to attend.

Please distribute: The participants do not have to be members of the Chapter.



Installation of Arlington-Fairfax IWLA Junior Chapter for 2018

The following are the newly elected Junior Chapter officers and directors who were sworn in by Chapter Vice-President and Virginia National Director Pamela Meara at the January 2, 2018, Chapter board of directors meeting.

Junior Chapter Officers:

President Grace Cason
Vice-President Stefan Arseneau
Secretary Jack Kersey
Treasurer Jacob Bzdafka
Director-at-Large Olivia Clay
Director-at-Large Niya Burney
Director-at-Large Becca Lamb



December 2017 Gun Show

On December 29-31, 2017, Chapter volunteers worked the Chapters membership booth at the Chantilly Gun Show to promote the Chapter and build a list of people interested in membership. It was a cold weekend, but foot traffic was brisk. There were 54 individuals who signed up as interested in membership and many more took information about the Chapter.



Club Skeet Shoots 2018 Mark Your Calendar!

Memorial Open May 26-27
Fall 50's September 8
Closed Club September 9
Doubles Marathon August 4

E-mail IWLASkeet@yahoo.com for more info or to be added to the mailing list.



Opening Day of Skeet & Trap Winter League

Just another Sunday at the club...through the morning quite the call of "PULL" was heard ... a second later the air was sharp with the bark of a shotgun within seconds the sound repeated across the Skeet & Trap Ranges. Winter League for 2018 kicked off and as expected it was COLD.

Twenty-eight teams, 168 members will shoot skeet and trap over the next 13 weeks. What's not to like, we get to enjoy friends, competition, wind, rain, snow, cold and yes, occasionally a nice clear day. The grill is open and serving hamburgers and hotdogs as you like. All shooters can contribute to their team as each shooter is provided a factored handicap to level their shooting ability.

Who wants to shoot during the spring, summer or fall—when with winter league you can be challenged to hit a clay

that is weaving and dodging in a winter breeze ... or enjoy watching your shot group cut through falling snow clearly showing you how you really missed that last clay.



Photography by John Dwyier



THANK YOU FOR YOUR SUPPORT!

Arlington-Fairfax Chapter, Izaak Walton League of America
P.O Box 366
Centreville, VA 20122

Dear Arlington-Fairfax Chapter:

Thank you for your support during my 2017 Girl Scout cookie season! Because of generous donations of 4 case (48 boxes) of cookies, I was able to donate 241 boxes of cookies to the brave men and women serving our great nation. Cookies were delivered to the USO-Washington at Fort Belvoir.

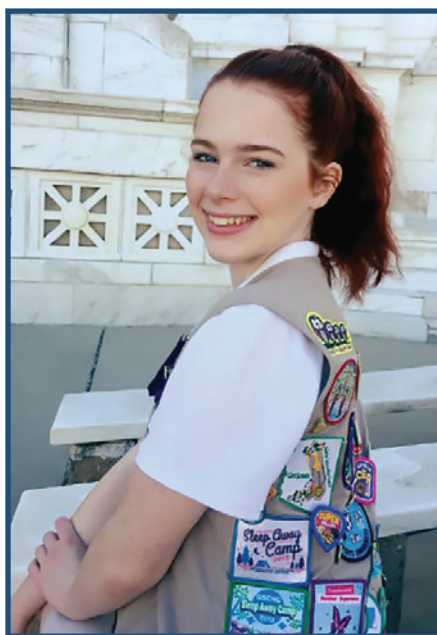
The generous support and donations from wonderful organizations like the Arlington-Fairfax Chapter, Izaak Walton League of America have made it possible for me to make a difference in the life of our American heroes. By being able to support our military it is evident that I am able to change the world one cookie at a time. Over the course of my Girl Scout career I have sent more than 5,000 boxes of cookies overseas. Being able to send cookies is just a small token of my appreciation for their service.

Your support not only helped our service men and women but also helped me fund my God Award project as well as fund and operate the local Girl Scout camps which are dependent of the sales of Girl Scout cookies.

Thank you so very much for your continued support!

Sincerely,

Mary



Thank you from Mary Subia of Girl Scout Troop 4912.

February 2018

Arlington-Fairfax Chapter, Inc., IWLA Calendar

Monday	Tuesday	Wednesday	Thursday	Friday	Saturday	Sunday																																																																																				
<div> <div>Jan 2018</div> <table> <tr><td>M</td><td>T</td><td>W</td><td>T</td><td>F</td><td>S</td><td>S</td></tr> <tr><td>1</td><td>2</td><td>3</td><td>4</td><td>5</td><td>6</td><td>7</td></tr> <tr><td>8</td><td>9</td><td>10</td><td>11</td><td>12</td><td>13</td><td>14</td></tr> <tr><td>15</td><td>16</td><td>17</td><td>18</td><td>19</td><td>20</td><td>21</td></tr> <tr><td>22</td><td>23</td><td>24</td><td>25</td><td>26</td><td>27</td><td>28</td></tr> <tr><td>29</td><td>30</td><td>31</td><td></td><td></td><td></td><td></td></tr> </table> </div> <div> <div>Mar 2018</div> <table> <tr><td>M</td><td>T</td><td>W</td><td>T</td><td>F</td><td>S</td><td>S</td></tr> <tr><td></td><td></td><td></td><td>1</td><td>2</td><td>3</td><td>4</td></tr> <tr><td>5</td><td>6</td><td>7</td><td>8</td><td>9</td><td>10</td><td>11</td></tr> <tr><td>12</td><td>13</td><td>14</td><td>15</td><td>16</td><td>17</td><td>18</td></tr> <tr><td>19</td><td>20</td><td>21</td><td>22</td><td>23</td><td>24</td><td>25</td></tr> <tr><td>26</td><td>27</td><td>28</td><td>29</td><td>30</td><td>31</td><td></td></tr> </table> </div>			M	T	W	T	F	S	S	1	2	3	4	5	6	7	8	9	10	11	12	13	14	15	16	17	18	19	20	21	22	23	24	25	26	27	28	29	30	31					M	T	W	T	F	S	S				1	2	3	4	5	6	7	8	9	10	11	12	13	14	15	16	17	18	19	20	21	22	23	24	25	26	27	28	29	30	31		1 4-9PM Woodson/ Mavericks (AR)	2 3-5:30PM Fairfax/ Centreville (AR) 5:30-9PM Air Range Open Members/Guests/ Public (AR) <i>Groundhog Day</i>	3 7AM-Noon Lake Braddock Air Rifle (AR) Noon-4PM PHSRL Matches (AR) WINTER STAR FITA Indoor Archery Tournament (FA)	4 8AM-Noon Air Pistol Match (AR) 9AM-Noon Air Pistol Match (AR) 11AM CRA Meeting (FA) Noon-3PM Youth Progressive Pistol (AR) 5-7PM Junior Olympic Archery Development (TA) Winter League (ST)
M	T	W	T	F	S	S																																																																																				
1	2	3	4	5	6	7																																																																																				
8	9	10	11	12	13	14																																																																																				
15	16	17	18	19	20	21																																																																																				
22	23	24	25	26	27	28																																																																																				
29	30	31																																																																																								
M	T	W	T	F	S	S																																																																																				
			1	2	3	4																																																																																				
5	6	7	8	9	10	11																																																																																				
12	13	14	15	16	17	18																																																																																				
19	20	21	22	23	24	25																																																																																				
26	27	28	29	30	31																																																																																					
5 4-8PM Air Range Open Members/Guests/ Public (AR) 6:30-9PM Troop 1137 (FH)	6 6-8PM Dinner @ FA 7:30PM Board Meeting (FH) West Springfield 4-9PM (AR)	7 3-7PM Robinson (AR)	8 4-9PM Woodson/ Mavericks (AR)	9 3-5:30PM Fairfax/ Centreville (AR) 5:30-9PM Air Range Open Members/Guests/ Public (AR)	10 7AM-Noon Lake Braddock Air Rifle (AR) 8AM-530PM IBEP Archery Class (FA) Noon-4PM PHSRL Matches (AR) 4-6PM Adult Member Air Pistol (AR) 8-5PM NRA Pistol Coach School	11 8AM-Noon NRA Pistol Coach Level 1 (AR) Noon-3PM Youth Progressive Pistol (AR) Noon-3PM Air Range Open: Members/Guests 5-7PM Junior Olympic Archery Development (TA) Winter League (ST)																																																																																				
12 4-8PM Air Range Open Members/Guests/ Public (AR) 6:30-9PM Troop 1137 (FH) <i>Lincoln's</i> <i>Birthday</i>	13 6-8PM Dinner @ FA 7-10PM ABA Meeting (FA) West Springfield 4-9PM (AR)	14 3-7PM Robinson (AR) <i>Valentine's Day</i>	15 4-9PM Woodson/ Mavericks (AR) 6:30-9PM New Member Orientation (FH)	16 3-5:30PM Fairfax/ Centreville (AR) 5:30-9PM Air Range Open Members/Guests/ Public (AR)	17 7AM-7PM PHSRL Regionals (AR) Pack 864 Pinewood Derby (FH)	18 7AM-7PM Snow Date PHRL Regionals (AR) 8AM-Noon Bull Run Muzzleloaders (RP) 5-7PM Junior Olympic Archery Development (TA) 6-9PM Acorns Practice (AR) Winter League (ST)																																																																																				
19 4-8PM Air Range Open Members/Guests/ Public (AR) 6:30-9PM Troop 1137 (FH) <i>President's Day</i>	20 6-8PM Dinner @ FA 7:30PM Membership Meeting (FH) West Springfield 4-9PM (AR)	21 3-7PM Robinson (AR)	22 4-9PM Woodson/ Mavericks (AR) <i>Washington's</i> <i>Birthday</i>	23 3-5:30PM Fairfax/ Centreville (AR) 5:30-9PM Air Range Open Members/Guests/ Public (AR)	24 4-6PM Adult Member Air Pistol (AR) 7AM-7PM CMP Regionals/JORQ (AR)	25 1PM Archery 101 Class (FA) 5-7PM Junior Olympic Archery Development (TA) Winter League (ST)																																																																																				
26 4-8PM Air Range Open Members/Guests/ Public (AR) 6-9PM Suburban Whitetail BOD (FA) 6:30-9PM Troop 1137 (FH)	27 6-8PM Dinner @ FA West Springfield 4-9PM (AR)	28 3-7PM Robinson (AR)																																																																																								

AF=Athletic Field, AR=Air Range, Camp=Camp sites, FA=Field Archery, FH=Field house, LP=Large Pavilion, RP=Rifle/Pistol, SP=Small Pavilion, ST=Skeet/Trap, TA=Target Archers

March 2018

Arlington-Fairfax Chapter, Inc., IWLA Calendar

Monday		Tuesday	Wednesday	Thursday	Friday	Saturday	Sunday																																																																																										
<div>Feb 2018</div> <table><tr><td>M</td><td>T</td><td>W</td><td>T</td><td>F</td><td>S</td><td>S</td></tr><tr><td></td><td></td><td></td><td>1</td><td>2</td><td>3</td><td>4</td></tr><tr><td>5</td><td>6</td><td>7</td><td>8</td><td>9</td><td>10</td><td>11</td></tr><tr><td>12</td><td>13</td><td>14</td><td>15</td><td>16</td><td>17</td><td>18</td></tr><tr><td>19</td><td>20</td><td>21</td><td>22</td><td>23</td><td>24</td><td>25</td></tr><tr><td>26</td><td>27</td><td>28</td><td></td><td></td><td></td><td></td></tr></table>		M	T	W	T	F	S	S				1	2	3	4	5	6	7	8	9	10	11	12	13	14	15	16	17	18	19	20	21	22	23	24	25	26	27	28					<div>Apr 2018</div> <table><tr><td>M</td><td>T</td><td>W</td><td>T</td><td>F</td><td>S</td><td>S</td></tr><tr><td></td><td></td><td></td><td></td><td></td><td></td><td>1</td></tr><tr><td>2</td><td>3</td><td>4</td><td>5</td><td>6</td><td>7</td><td>8</td></tr><tr><td>9</td><td>10</td><td>11</td><td>12</td><td>13</td><td>14</td><td>15</td></tr><tr><td>16</td><td>17</td><td>18</td><td>19</td><td>20</td><td>21</td><td>22</td></tr><tr><td>23</td><td>24</td><td>25</td><td>26</td><td>27</td><td>28</td><td>29</td></tr><tr><td>30</td><td></td><td></td><td></td><td></td><td></td><td></td></tr></table>	M	T	W	T	F	S	S							1	2	3	4	5	6	7	8	9	10	11	12	13	14	15	16	17	18	19	20	21	22	23	24	25	26	27	28	29	30							1 4-9PM Woodson/ Mavericks (AR)	2 3-5:30PM Fairfax/ Centreville (AR) 5-7PM Smallbore Rifle (RP) 5:30-9PM Air Range Open Members/Guests/ Public (AR)	3 7AM-Noon Lake Braddock Air Rifle (AR) 8-5PM Bullseye Clinic (FH) (8AM-Noon Sunday RP)	4 11AM CRA Meeting (FA) Noon-3PM Sharpshooters (AR) 5-7PM Junior Olympic Archery Development (TA) Winter League (ST)
M	T	W	T	F	S	S																																																																																											
			1	2	3	4																																																																																											
5	6	7	8	9	10	11																																																																																											
12	13	14	15	16	17	18																																																																																											
19	20	21	22	23	24	25																																																																																											
26	27	28																																																																																															
M	T	W	T	F	S	S																																																																																											
						1																																																																																											
2	3	4	5	6	7	8																																																																																											
9	10	11	12	13	14	15																																																																																											
16	17	18	19	20	21	22																																																																																											
23	24	25	26	27	28	29																																																																																											
30																																																																																																	
5 4-8PM Air Range Open Members/Guests/ Public (AR) 6:30-9PM Troop 1137 (FH)	6 6-8PM Dinner @ FA 7:30PM Board Meeting (FH) West Springfield 4-9PM (AR)	7 3-7PM Robinson (AR)	8 4-9PM Woodson/ Mavericks (AR)	9 3-5:30PM Fairfax/ Centreville (AR) 5-7PM Smallbore Rifle (RP) 5:30-9PM Air Range Open Members/Guests/ Public (AR)	10 7AM-Noon Lake Braddock Air Rifle (AR) 8AM-530PM IBEP Archery Class (FA) 4-6PM Adult Member Air Pistol (AR) 8-5PM NRA Rifle Coach School (FH)	11 Daylight Savings Time Begins 5-7PM Junior Olympic Archery Development (TA) 6PM-9PM Acorns Practice (AR) Noon-3PM Air Range Open: Members/Guests Noon-3PM YAP (AR)																																																																																											
BSA Troop 577 (RP, SP, Camp 1-3)																																																																																																	
12 4-8PM Air Range Open Members/Guests/ Public (AR) 6:30-9PM Troop 1137 (FH)	13 6-8PM Dinner @ FA West Springfield 4-9PM (AR)	14 3-7PM Robinson (AR)	15 4-9PM Woodson/ Mavericks (AR)	16 3-5:30PM Fairfax/ Centreville (AR) 5-7PM Smallbore Rifle (RP) 5:30-9PM Air Range Open Members/ Guests/Public (AR)	17 7AM-Noon Lake Braddock Air Rifle (AR) 8AM-Noon New Member Orientation (FH) 1-9pm Pack 864 Banquet (FH) St. Patrick's Day	18 1PM Archery 101 Class (FA) 5-7PM Junior Olympic Archery Development (TA) 8AM-Noon Bull Run Muzzleloaders (RP) 9-Noon Air Pistol Match (AR) Noon-3PM Air Range Open: Members/Guests Noon-3PM YAP (AR) Winter League (ST)																																																																																											
19 4-8PM Air Range Open Members/Guests/ Public (AR) 6:30-9PM Troop 1137 (FH)	20 6-8PM Dinner @ FA 7:30PM Membership Meeting (FH) West Springfield 4-9PM (AR)	21 3-7PM Robinson (AR)	22 4-9PM Woodson/ Mavericks (AR)	23 3-5:30PM Fairfax/ Centreville (AR) 5-7PM Smallbore Rifle (RP) 5:30-9PM Air Range Open Members/Guests/ Public (AR)	24 7AM-Noon Lake Braddock Air Rifle (AR) 9AM-7PM NRA Basics of Pistol Shooting (FH) 4-6PM Adult Member Air Pistol (AR)	25 9AM Winter Classic 3D Shoot (FA) 5-7PM Junior Olympic Archery Development (TA) Winter League (ST)																																																																																											
26 4-8PM Air Range Open Members/Guests/ Public (AR) 6-9PM Suburban Whitetail BOD (FA) 6:30-9PM Troop 1137 (FH) 9-4PM NRA Shotgun Camp 9-4PM NRA Air Camp (AR)	27 6-8PM Dinner @ FA West Springfield 4-9PM (AR)	28 3-7PM Robinson (AR)	29 4-9PM Woodson/ Mavericks (AR) Newsletter Closeout	30 3-5:30PM Fairfax/ Centreville (AR) 5-7PM Smallbore Rifle (RP) 5:30-9PM Air Range Open Members/Guests/ Public (AR)	31 7AM-Noon Lake Braddock Air Rifle (AR) Prep Match (Quals + Finals) (AR)																																																																																												

AF=Athletic Field, AR=Air Range, Camp=Camp sites, FA=Field Archery, FH=Field house, LP=Large Pavilion, RP=Rifle/Pistol, SP=Small Pavilion, ST=Skeet/Trap, TA=Target Archers

April 2018

Arlington-Fairfax Chapter, Inc., IWLA Calendar

Monday	Tuesday	Wednesday	Thursday	Friday	Saturday	Sunday																																																																																				
<div> <div>Mar 2018</div> <table> <tr><td>M</td><td>T</td><td>W</td><td>T</td><td>F</td><td>S</td><td>S</td></tr> <tr><td></td><td></td><td></td><td>1</td><td>2</td><td>3</td><td>4</td></tr> <tr><td>5</td><td>6</td><td>7</td><td>8</td><td>9</td><td>10</td><td>11</td></tr> <tr><td>12</td><td>13</td><td>14</td><td>15</td><td>16</td><td>17</td><td>18</td></tr> <tr><td>19</td><td>20</td><td>21</td><td>22</td><td>23</td><td>24</td><td>25</td></tr> <tr><td>26</td><td>27</td><td>28</td><td>29</td><td>30</td><td>31</td><td></td></tr> </table> </div> <div> <div>May 2018</div> <table> <tr><td>M</td><td>T</td><td>W</td><td>T</td><td>F</td><td>S</td><td>S</td></tr> <tr><td></td><td></td><td></td><td>1</td><td>2</td><td>3</td><td>4</td></tr> <tr><td>5</td><td>6</td><td>7</td><td>8</td><td>9</td><td>10</td><td>11</td></tr> <tr><td>12</td><td>13</td><td>14</td><td>15</td><td>16</td><td>17</td><td>18</td></tr> <tr><td>19</td><td>20</td><td>21</td><td>22</td><td>23</td><td>24</td><td>25</td></tr> <tr><td>26</td><td>27</td><td>28</td><td>29</td><td>30</td><td>31</td><td></td></tr> </table> </div>						M	T	W	T	F	S	S				1	2	3	4	5	6	7	8	9	10	11	12	13	14	15	16	17	18	19	20	21	22	23	24	25	26	27	28	29	30	31		M	T	W	T	F	S	S				1	2	3	4	5	6	7	8	9	10	11	12	13	14	15	16	17	18	19	20	21	22	23	24	25	26	27	28	29	30	31		1 EASTER <i>(all ranges closed)</i>
M	T	W	T	F	S	S																																																																																				
			1	2	3	4																																																																																				
5	6	7	8	9	10	11																																																																																				
12	13	14	15	16	17	18																																																																																				
19	20	21	22	23	24	25																																																																																				
26	27	28	29	30	31																																																																																					
M	T	W	T	F	S	S																																																																																				
			1	2	3	4																																																																																				
5	6	7	8	9	10	11																																																																																				
12	13	14	15	16	17	18																																																																																				
19	20	21	22	23	24	25																																																																																				
26	27	28	29	30	31																																																																																					
2 4-8PM Air Range Open Members/Guests/ Public (AR) 6:30-9PM Troop 1137 (FH)	3 6-8PM Dinner @ FA 7:30PM Board Meeting (FH) West Springfield 4-9PM (AR)	4 3-7PM Robinson (AR)	5 4-9PM Woodson/ Mavericks (AR)	6 3-5:30PM Fairfax/ Centreville (AR) 5-7PM Smallbore Rifle (RP) 5:30-9PM Air Range Open Members/Guests/ Public (AR)	7 7AM-Noon Lake Braddock Air Rifle (AR) 8AM-5PM VA Division President's Meeting (FH) Noon-3PM Sharpshooters (AR)	8 8AM-5PM NRA RSO Course (FH) 9AM Bullseye Match (RP) 11AM-4PM Kirill S. (SP) 11AM CRA Meeting (FA) Noon-3PM Air Range Open: Members/Guests Noon-3PM YAP (AR) 5-9PM Suburban Whitetail GM (FA)																																																																																				
9 4-8PM Air Range Open Members/Guests/ Public (AR) 6:30-9PM Troop 1137 (FH)	10 6-8PM Dinner @ FA West Springfield 4-9PM (AR)	11 3-7PM Robinson (AR)	12 3-7PM Service Rifle (RP) 4-9PM Woodson/ Mavericks (AR)	13 3-5:30PM Fairfax/ Centreville (AR) 5-7PM Smallbore Rifle (RP) 5:30-9PM Air Range Open Members/Guests/ Public (AR)	14 7AM-Noon Lake Braddock Air Rifle (AR) 8-5PM VA Div Meeting (FH, LP) 8AM-530PM IBEP Archery Class (FA) Noon-3PM Sharpshooters (AR) Noon-4PM NRA Shotgun PreQual	15 8AM-Noon Bull Run Muzzleloaders (RP) 9AM-Noon Air Pistol Match (AR) Noon-3PM Air Range Open: Members/Guests Noon-3PM YAP (AR) Winter League (ST)																																																																																				
16 4-8PM Air Range Open Members/Guests/ Public (AR) 6:30-9PM Troop 1137 (FH)	17 6-8PM Dinner @ FA 7:30PM Membership Meeting (FH) West Springfield 4-9PM (AR)	18 3-7PM Robinson (AR)	19 4-9PM Woodson/ Mavericks (AR)	20 9AM-4PM NRA BIT 3-5:30PM Fairfax/ Centreville (AR) 5-7PM Smallbore Rifle (RP) 5:30-9PM Air Range Open Members/ Guests/Public (AR)	21 7AM-Noon Lake Braddock Air Rifle (AR) <div>8-5PM NRA Shotgun Instructor Course</div> <div>BSA Troop 157 (Camp 1, 2, 3, SP)</div>	22 Noon-3PM Sharpshooters (AR) 1-4PM Archery 101 Class (FA)																																																																																				
23 4-8PM Air Range Open Members/Guests/ Public (AR) 6-9PM Suburban Whitetail BOD (FA) 6:30-9PM Troop 1137 (FH)	24 6-8PM Dinner @ FA West Springfield 4-9PM (AR)	25 3-7PM Robinson (AR) Newsletter Party	26 4-9PM Woodson/ Mavericks (AR)	27 3-5:30PM Fairfax/ Centreville (AR) 5-7PM Smallbore Rifle (RP) 5:30-9PM Air Range Open Members/Guests/ Public (AR)	28 7AM-Noon Lake Braddock Air Rifle (AR) Noon-3PM Sharpshooters (AR)	29																																																																																				
30 8-11AM GMU Class (AR) 4-8PM Air Range Open...Members/ Guests/Public (AR) 6:30-9PM Troop 1137 (FH)																																																																																										

AF=Athletic Field, AR=Air Range, Camp=Camp sites, FA=Field Archery, FH=Field house, LP=Large Pavilion, RP=Rifle/Pistol, SP=Small Pavilion, ST=Skeet/Trap, TA=Target Archers



Arlington-Fairfax Chapter, Inc.
Izaak Walton League of America
Post Office Box 366
Centreville, VA 20122-0366

Return Service Requested

NON-PROFIT ORG.
U.S. POSTAGE
PAID
CENTREVILLE, VA
PERMIT #6057



The Chapter Newsletter is your link to all Chapter
activities and information. Keep it handy.
It is also available on our Web site in color.

www.arlingtonfairfax-iwla.org

Check it out!

Chapter Property Address:

14708 Mount Olive Road
Centreville, VA 20121-2517

We print on recycled paper.